



**ALASKA DIVISION OF HOMELAND
SECURITY & EMERGENCY MANAGEMENT**
SITUATION REPORT
25-052• February 21, 2025



Toll-Free 1.800.478.2337

Anchorage Area 907.428.7000

SEOC 907.428.7100

<p><u>SEOC Preparedness Level</u> Level 1-Routine Operations</p>	<p>http://ready.alaska.gov</p>	<p><u>National Terrorism Advisory System:</u> Read the NTAS Bulletin here</p>
<p><u>Maritime Security (MARSEC)</u> Level:1- Minimum Appropriate Security Measures</p>	<p>WHO Novel Coronavirus Pandemic (COVID-19): 2019 Novel Coronavirus</p>	<p><u>Alaska Military Installation Force Protection</u> <u>Level:</u> FPCON Bravo</p>

(Significant changes from previous situation reports are red.)

Significant Issues:

NONE

Department of Health (DOH):

For current information, see: <https://health.alaska.gov/dph/Pages/default.aspx>
<https://health.alaska.gov/dph/Emergency/Pages/prepared/default.aspx>

NTAS Bulletin:

The current and expired bulletins can be viewed at the below link.
<https://www.dhs.gov/national-terrorism-advisory-system>

Travel Alerts and Conditions:

For current driving conditions, dial 511 or visit: <https://511.alaska.gov/>

Barry Arm Landslide / Tsunami Risk:

For the latest information on the Barry Arm Landslide and Tsunami risk, click here:
<https://dggs.alaska.gov/hazards/barry-arm-landslide.html>

Earthquakes:

United States Geological Service (USGS) Earthquake Information: <http://earthquake.usgs.gov/>
National Tsunami Warning Center: <http://tsunami.gov/>

Alaska Volcanoes:

ATKA Complex: Alert level: **Watch** and Aviation Color Code: **Orange**

Great Sitkin Alert Level: **Watch** and Aviation Color Code: **Orange**

Mt. Spurr Alert Level: **Advisory** and Aviation Color Code: **Yellow**

A single, small explosive event was detected in local seismic and infrasound data at 4:26 UTC (7:26 pm AKST). The Aviation Color Code and Alert Level has been changed to ORANGE/WATCH. The explosive event was short in duration (less than 10 seconds), and it is likely that a small amount of volcanic ash erupted during this event.

A meteorological cloud deck at an altitude of 8,000 to 10,000 ft above sea level obscured direct satellite observations, but no ash emissions were observed above the clouds. There have been no further explosive events observed and no noticeable change in seismic activity.

For Alaska Volcano updates, go to: <https://www.avo.alaska.edu/>

Air Quality Index (AQI) Advisories:

For the most up-to-date Air Quality Index Advisories:
<http://dec.alaska.gov/Applications/Air/airtoolsweb/Home/Index>

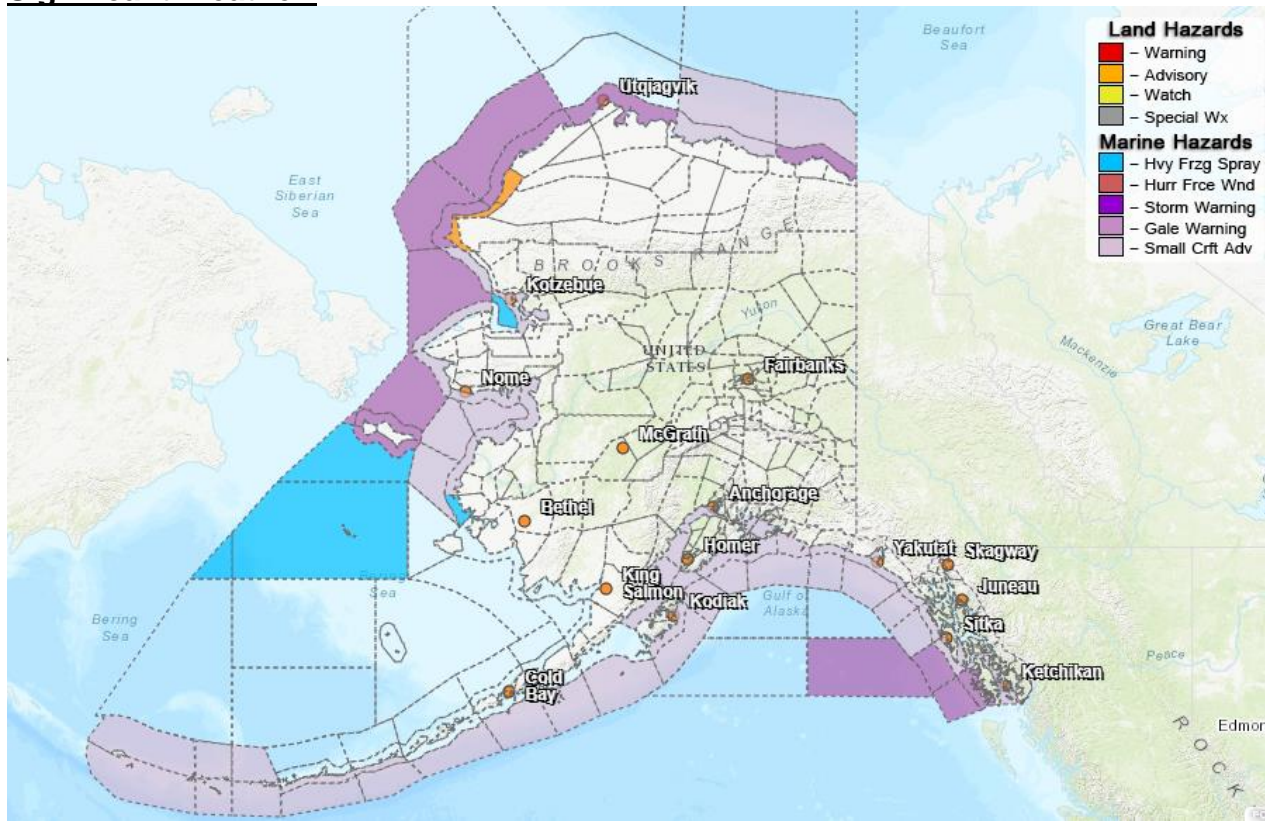
Spills of Oil and Hazardous Substances:

The Alaska Division of Environmental Conservation (ADEC) Spill Prevention and Response page is located at: <https://dec.alaska.gov/spar/>

Alaska Cyber Security Information:

State Employees may sign up for cybersecurity notifications and alerts at:
<https://oit.alaska.gov/security>

Significant Weather:

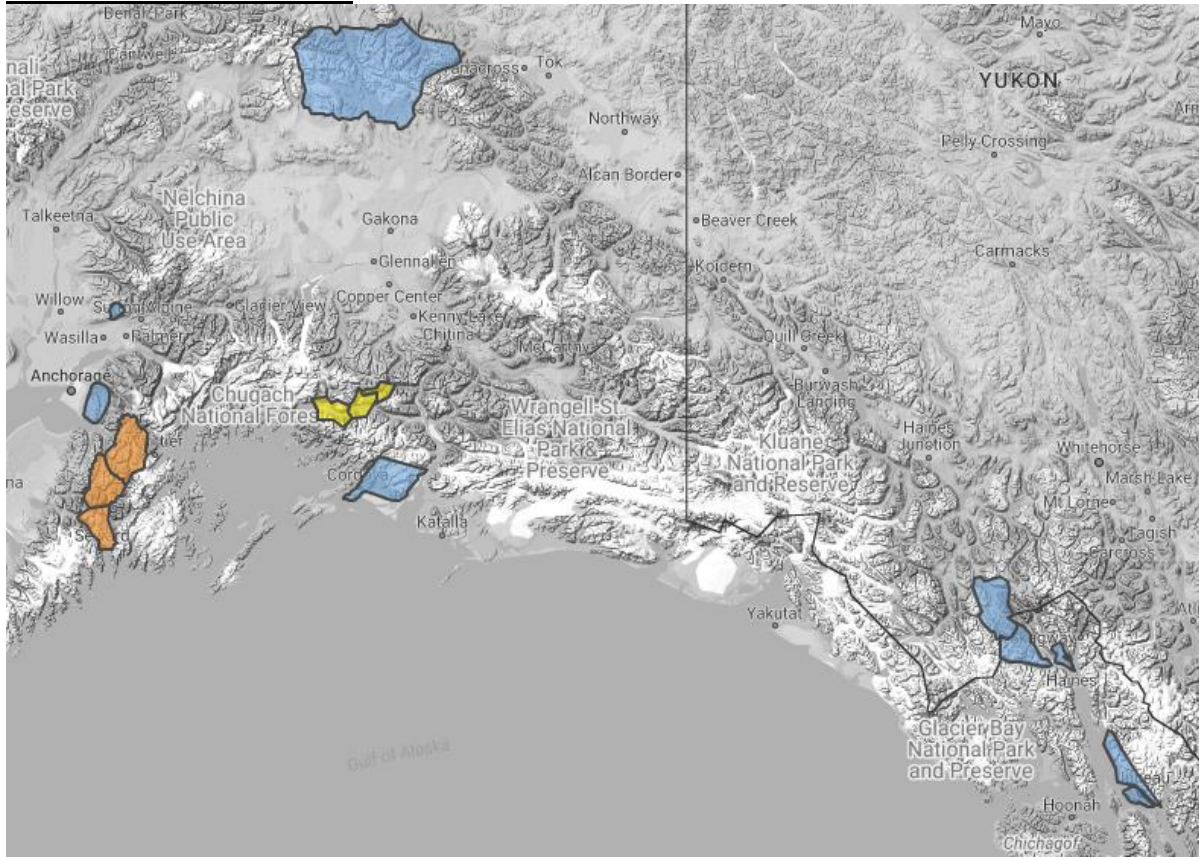


Winter weather Advisory:

Western Arctic Coast - WINTER WEATHER ADVISORY REMAINS IN EFFECT UNTIL 3 PM AKST SUNDAY

For more information and the most current weather, Watches / Warnings / Advisories go to:
<https://www.weather.gov/arh/>

Avalanche Conditions:



Summit Lake – Low below 2,500', **Considerable above 2,500'**

Turnagain Pass – Moderate below 2,500', **Considerable above 2,500'**

Seward and Lost Lake – Low below 2,500', **Considerable above 2,500'**

Valdez Maritime, Intermountain, and Continental -Moderate at all levels.

Hatcher Pass –Low at all levels.

For more information and the most current avalanche conditions, go to: <https://alaskasnow.org/>

The Next Situation Report will be on **February 24, 2025**. An interim report will be prompted by a significant change in the situation or the threat level. This report is posted on the internet at <https://ready.alaska.gov/sitrep>.

To register for email distribution, PLEASE go to:

<http://list.state.ak.us/mailman/listinfo/dhsem.situation.report>.

Direct questions regarding this report to the SEOC at 907-428-7100 or seoc@alaska.gov.